

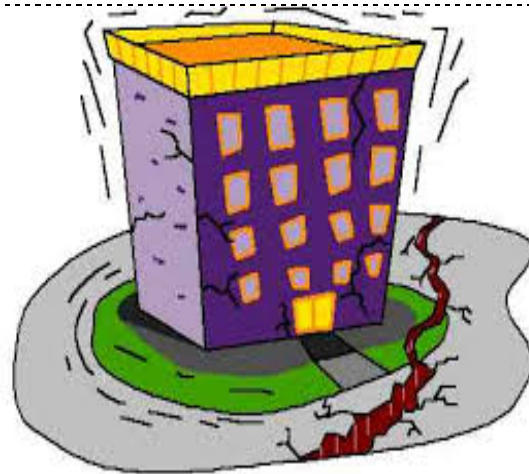
# earthquake

---

## earthquake



## earthquake



energy waves  
passing through  
Earth caused by  
a sudden shift  
of Earth's crust  
along a fault

# erode

---

# erode



# erode

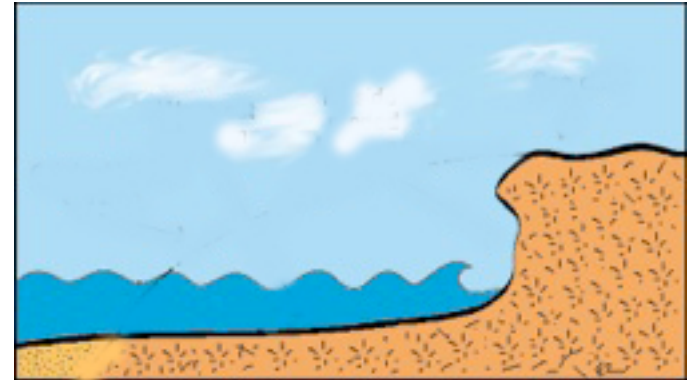


to wear away  
by the action  
of water, wind  
or glaciers

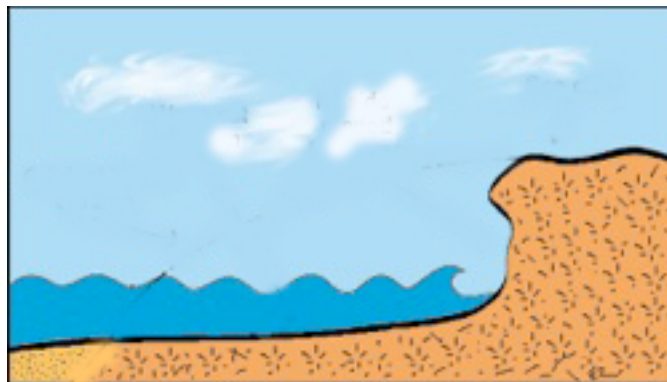
# erosion

---

## erosion



## erosion



the process of  
moving  
weathered bits  
of rocks from  
one place to  
another

# fault

---

# fault



# fault



a crack in  
Earth's crust  
that allows the  
crust to slip

# uplift

---

## uplift



## uplift



part of Earth's surface that rises above the surrounding land by great forces of heat and pressure deep within the earth

# volcano

---

## volcano



## volcano



an opening in  
Earth's crust that  
allows hot,  
melted rock, ash,  
and gases to  
erupt outward



# weathering

---

weathering



weathering



the physical  
breaking up of  
the rocks on  
Earth's surface  
into smaller  
pieces of rock or  
sand

# butte

---

## butte



## butte



an isolated hill  
with steep,  
even sides,  
and a flat top



# arches

---

# arches



---

# arches



curved rock formations,  
formed by a  
combination of  
erosional forces

# glaciers

---

## glaciers



## glaciers



thick  
layers of  
ice

# geological

---

# geological

---



# geological

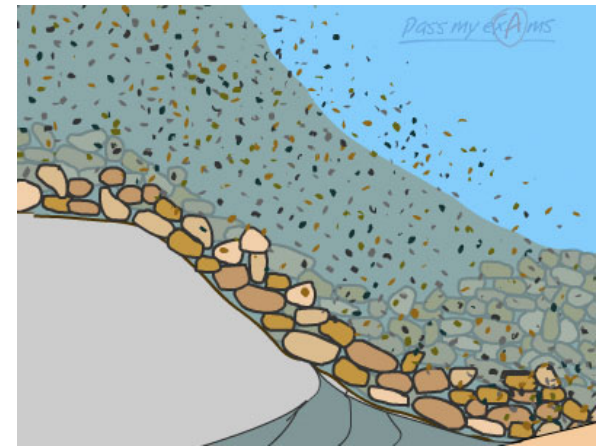


relating to the structure of Earth and the changes that have taken place over the years

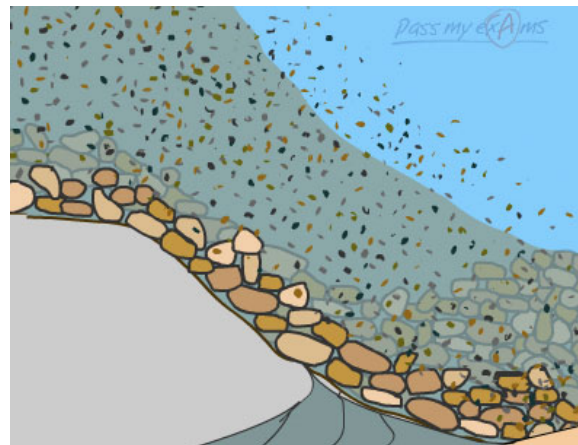
# deposition

---

## deposition



## deposition



the dropping of  
sand and rock  
carried by wind  
or water as it  
slows down or  
from ice that  
melts

